



Bug Fixes & Support

In our bug fixing and tracking system we prioritize the issues on the basis of severity P1, P2, P3 & P4. We support all software we design and deliver on the basis of a separate support / maintenance contracts.

The Advantage:

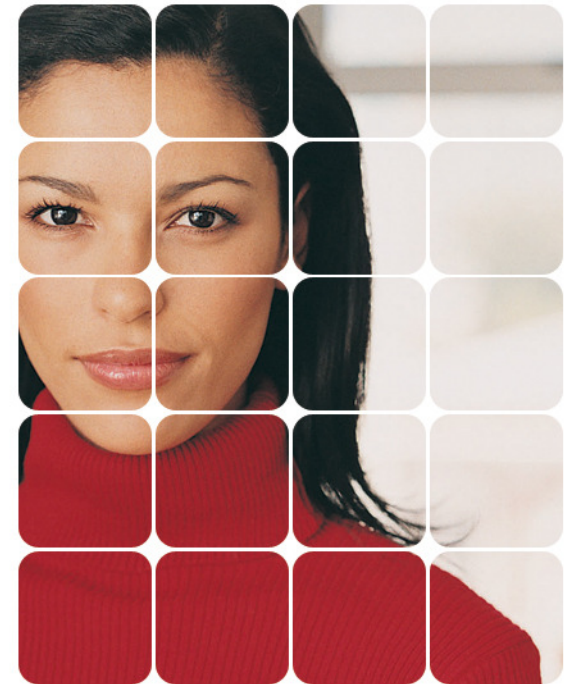
- We are unique resource for top IT expertise
- More cost effective than opening one's own development center
- Our in-house team of extremely dedicated to the needs of our clients
- We offer early negotiation of project deadlines and budget and never exceed them
- Helps reduce status reporting overhead, estimation errors and makes available the critical functionalities earlier
- 24 X 7 Support



Primary Business Address:

7129 Stoneridge Drive Frisco, TX 75034, USA
3225 Turtle creek Blvd., Dallas, TX 75219, USA

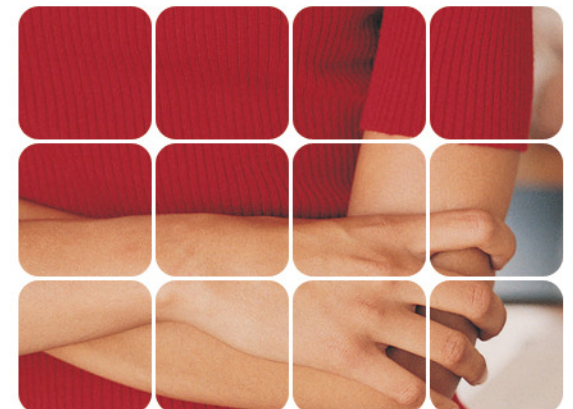
Srikanth Merianda
Phone: 972-333-2292
Fax: 215-344-4233
E-mail: srikanth@shirotechnologies.com
url: <http://www.shirotechnologies.com/>



COMPUTERTEKK

IT PROJECT OUTSOURCING INFORMATION

Virtually part of your team



Offshore Outsourcing

Software development outsourcing has become the most popular and the most successful business process, enabling the companies to create highly competitive solutions with considerable cost reduction and in shorter project time.

Offshore outsourcing provides all the benefits of local outsourcing and delivers additional value in resource availability, lower cost, higher quality and improved time-to-market. Besides providing more manpower and specialized knowledge for projects, it also helps in accessing additional capacity on demand, quick integration of technologies and speedy application development time.

At SHIRO, we possess the resources, expertise and experience to bring the above benefits to you



Consulting Model

When scope, specification and implementation plans of a software development project are not easy to define at the outset, Consulting Model becomes an attractive option. Under this model, you pay as per use of the hourly development efforts, making it the most flexible of the three models using additional or lesser resources.

To facilitate such scenarios, this model gives the flexibility of modulating your project team size, while optimizing on the time and costs. The execution steps under this model are same all our models except that the development effort is billed at the end of every month based on generated time sheet and pre-negotiated hourly rate

Fixed Scope Model

This model is suitable for customers with well defined requirements and project schedules. Under this option, the customer pays a pre-negotiated fixed price for the complete project which in turn is linked to well define deliverables. Deliverables include prototype and final version

Turn-Key Model (Staged Delivery)

SHIRO's Turnkey business model assigns project teams with the required team members, project managers, equipment and infrastructure based on project requirements to meet the customer's explicit business objectives. The Turn Key model is desirable when scope and specifications for the project are expected to change. At our development center, we go to extra lengths to simulate processes to exacting standards as per the customer's requirements. Customers pay in three installments, the pre-agreed amount for the project based on our staged deliveries.

Programming Expertise

Languages: VISUAL BASIC, ASP.NET, VB.NET, ASP, XML, AJAX, Google API, VBScript, ADO.NET, Perl, PHP, Python, C#, SOAP, JSP, Java, J2SE, J2ME, EJB, Servlets
Databases: Oracle, SQL Server, My SQL and Access databases

SaaS: Salesforce, Google Apps

* Copyright on the final software belongs to the customer

SHIRO Technologies Inc

OffShore Business Address

975, Gita Road,
Chamarajapuram
Mysore 570 007, India

Phone: +91-821-452-3664
Fax: +1-215-344-4233
E-mail: shashidhar@shirotechnologies.com